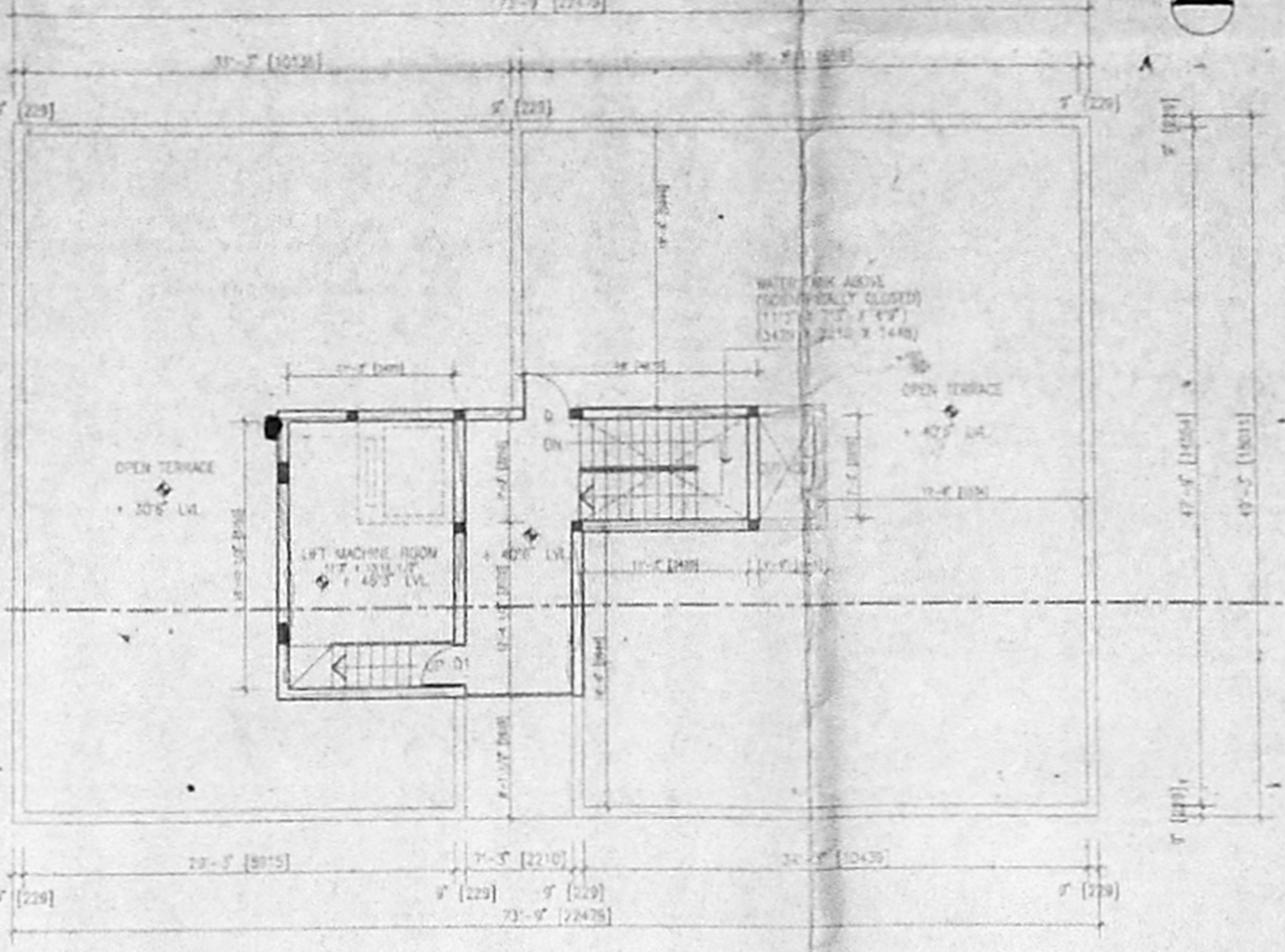
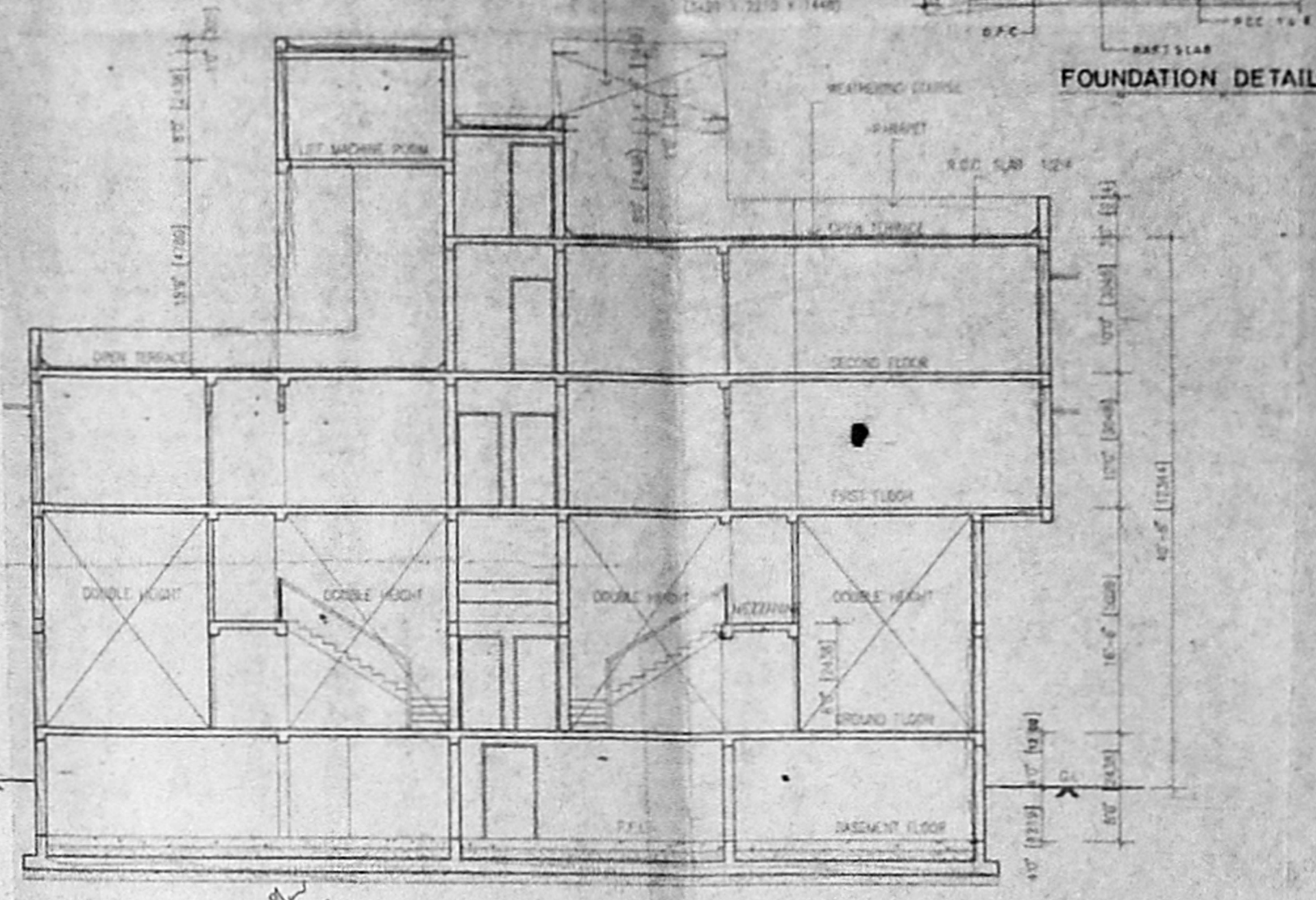


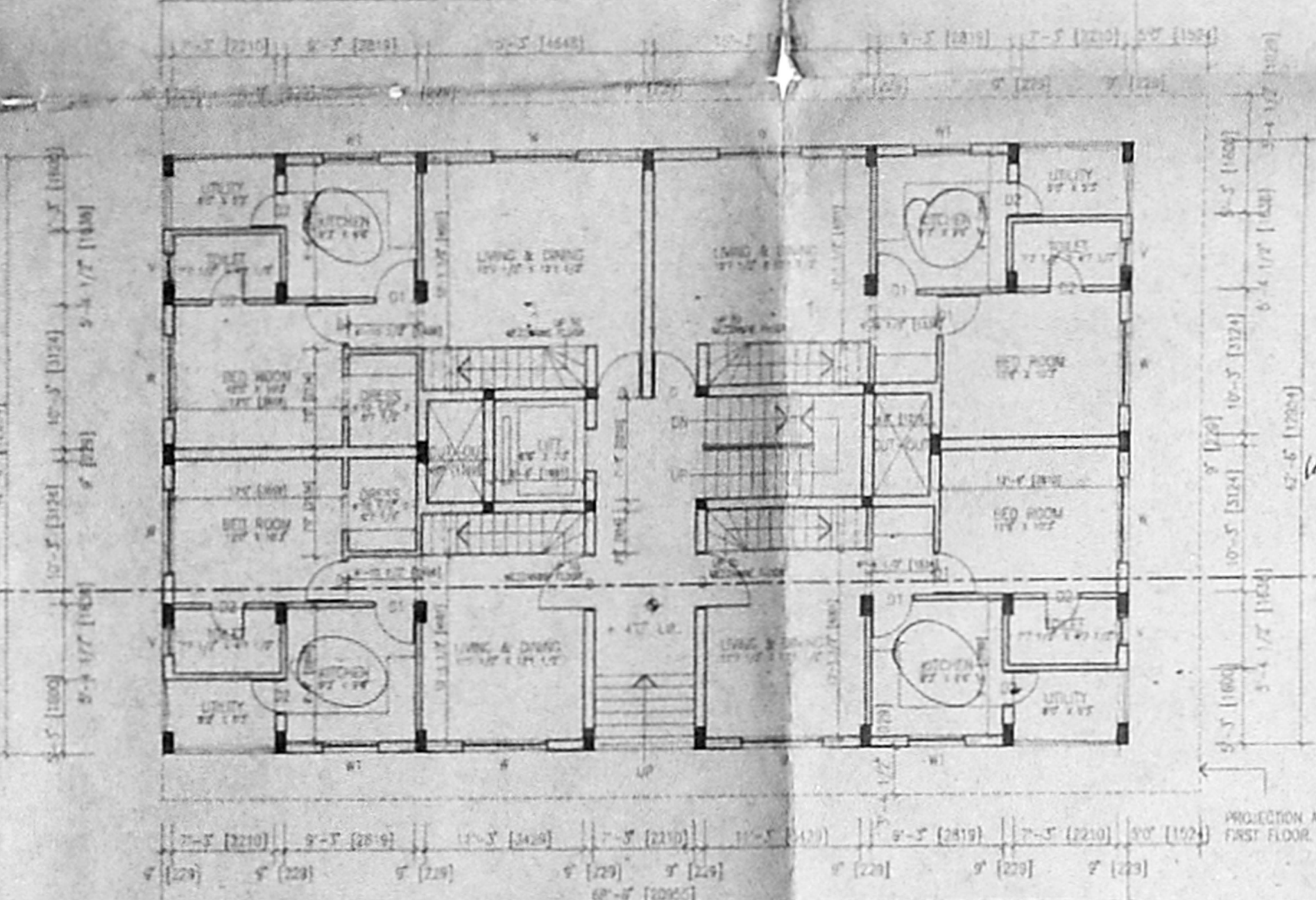
MEZZANINE FLOOR PLAN



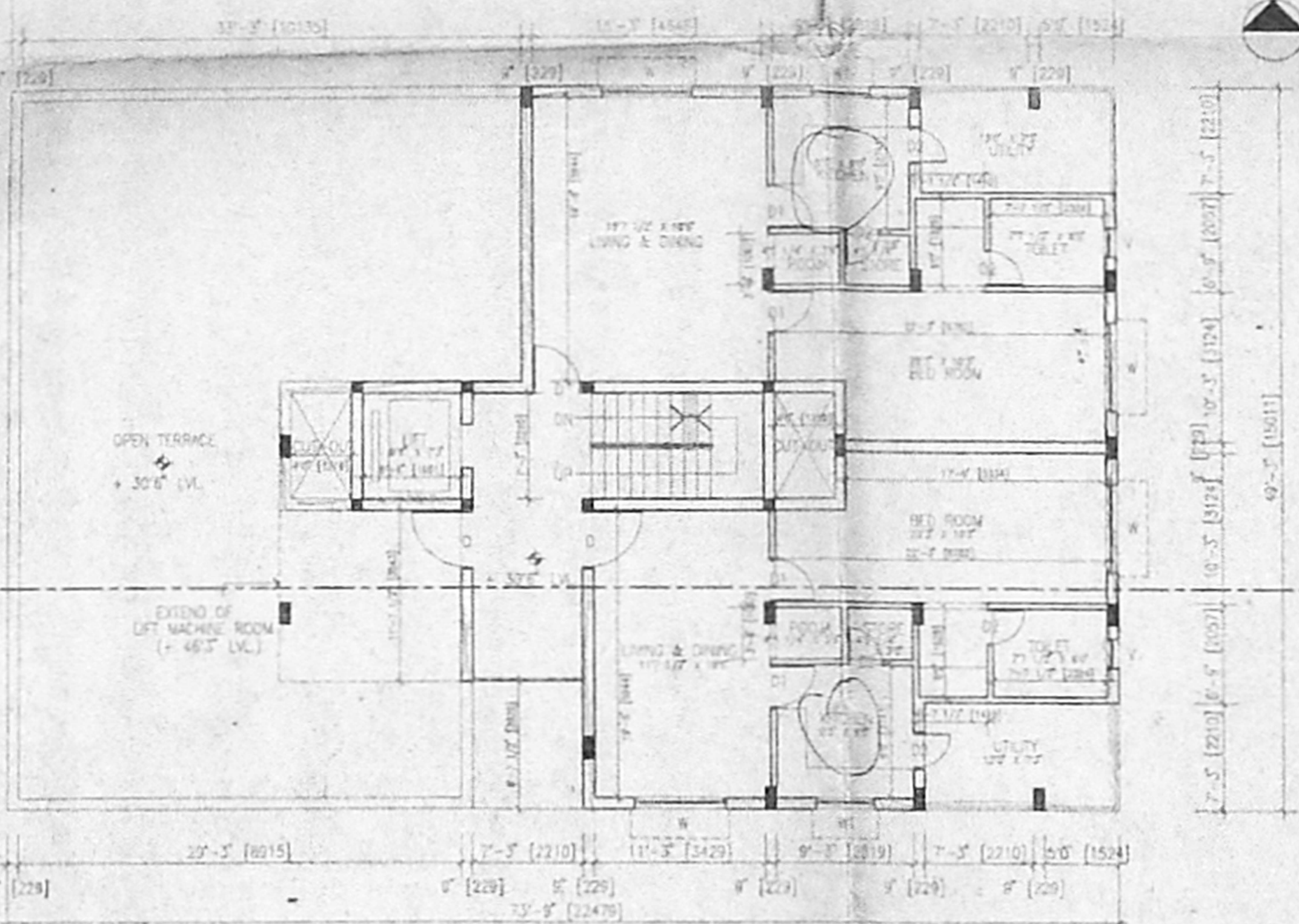
TERRACE PLAN



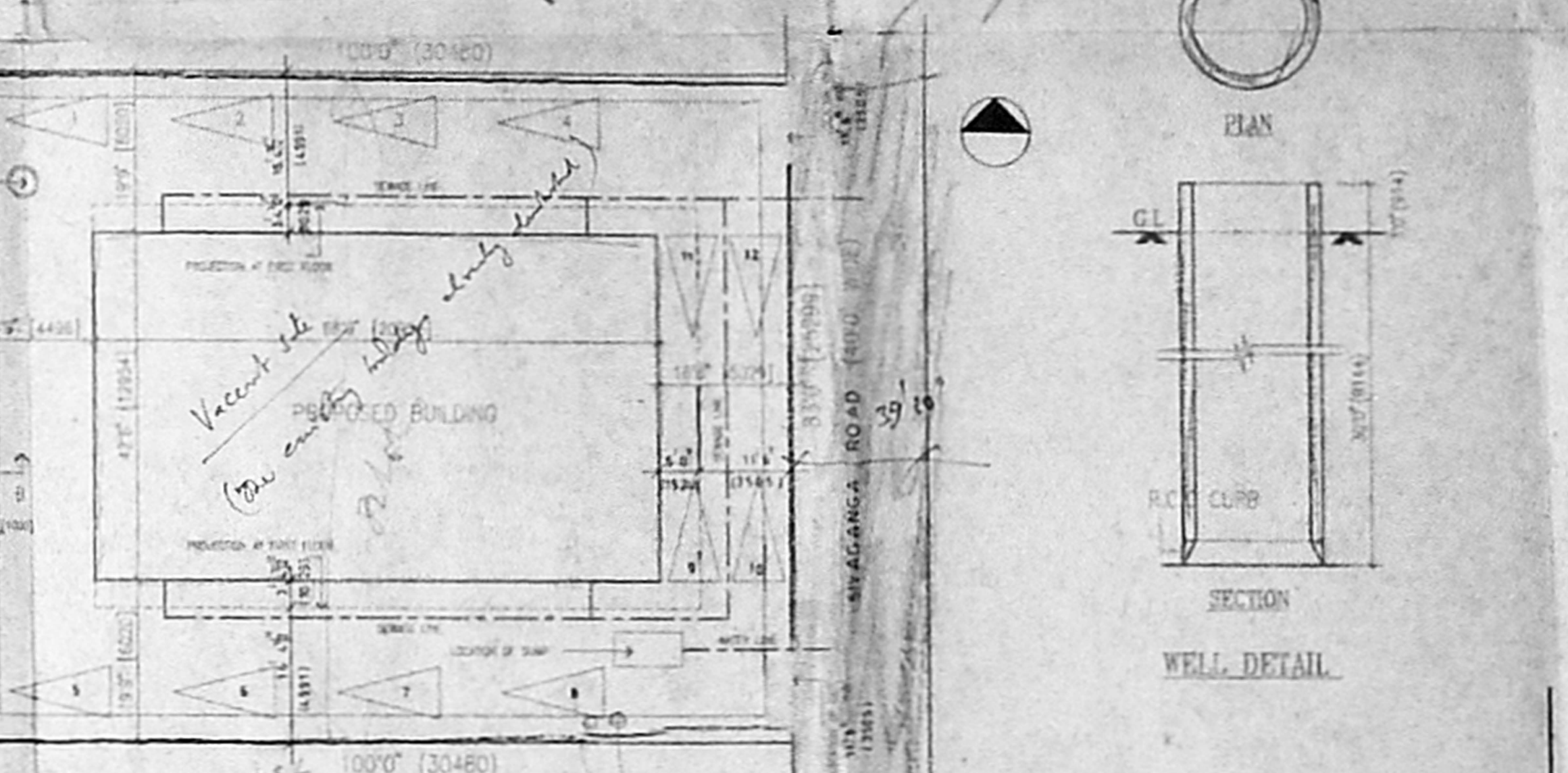
SECTION AT X-X



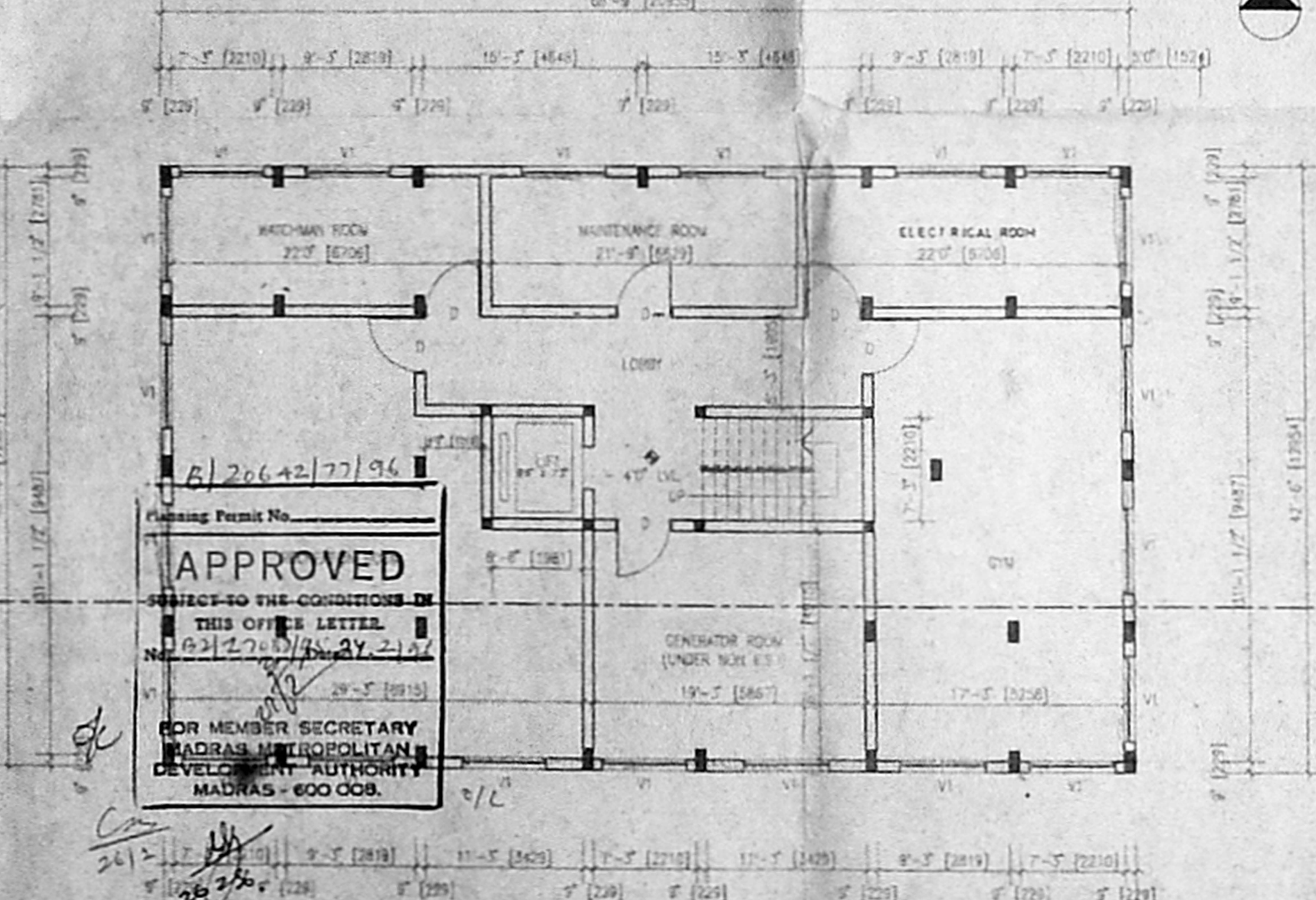
GROUND FLOOR PLAN



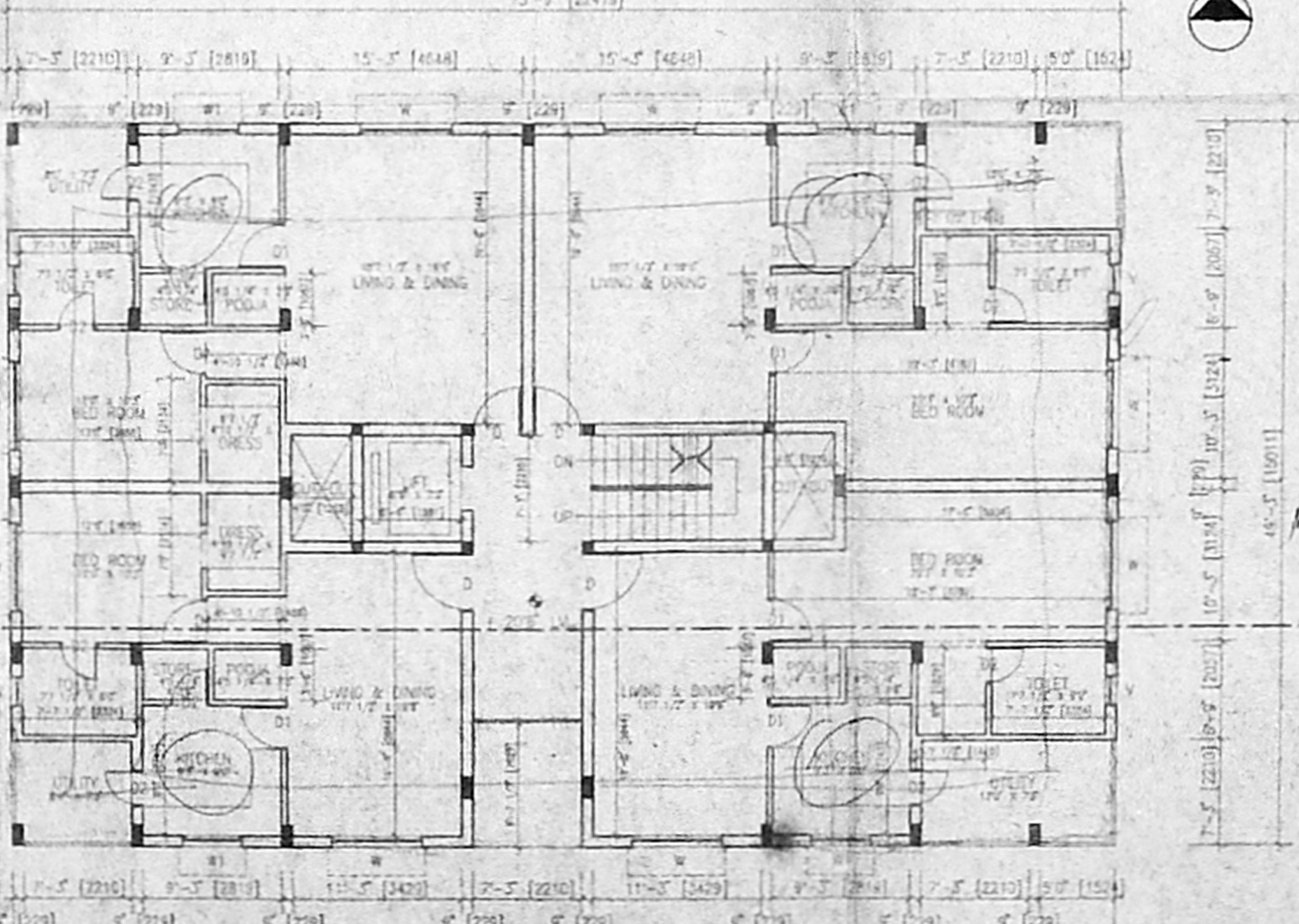
SECOND FLOOR PLAN



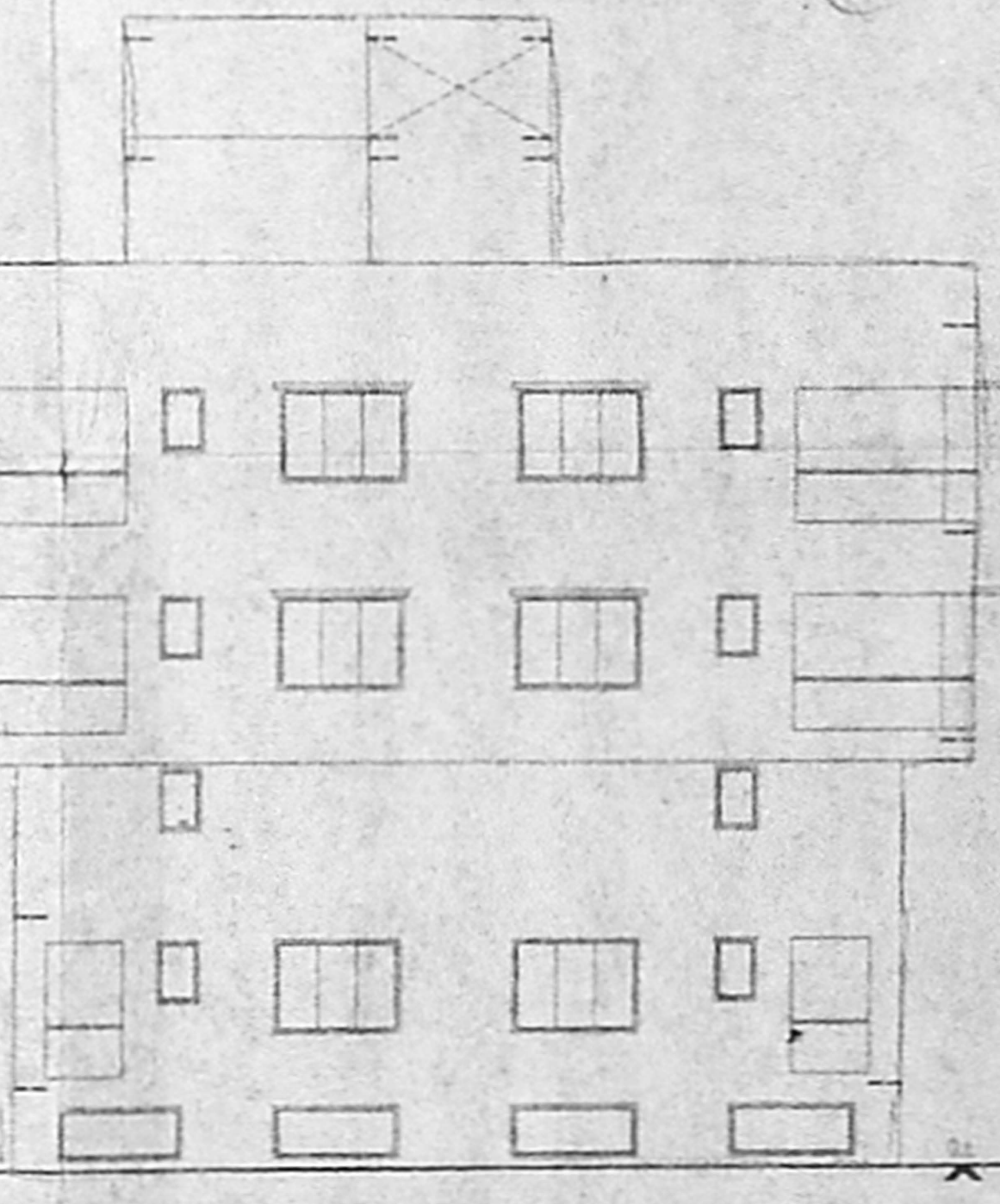
SITE PLAN (SCALE 1" TO 16'0")



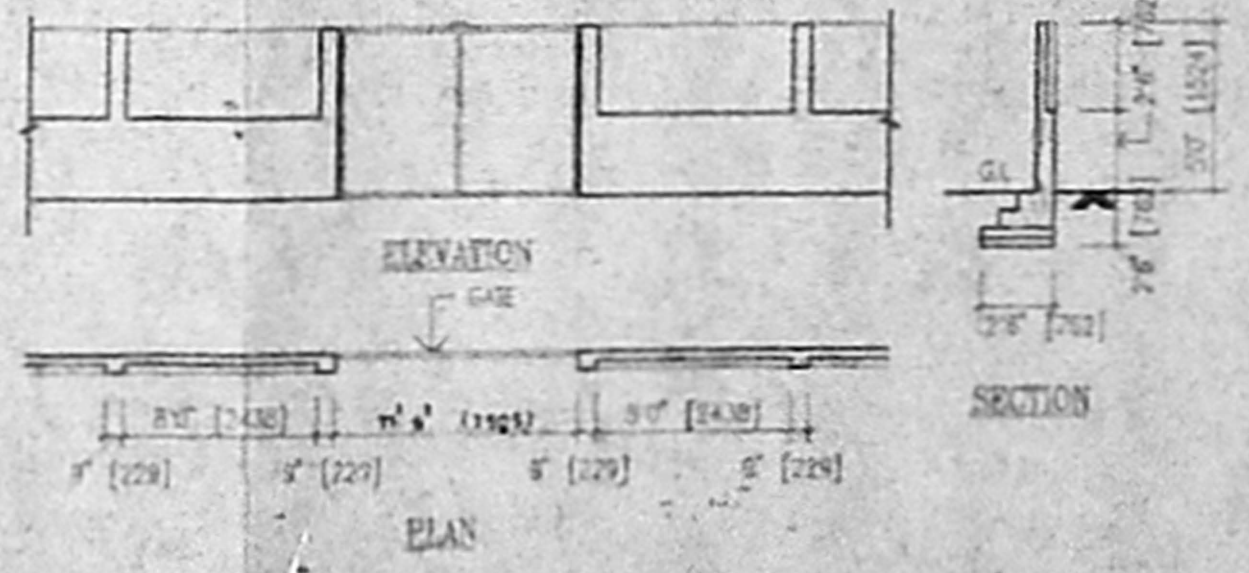
BASEMENT FLOOR PLAN



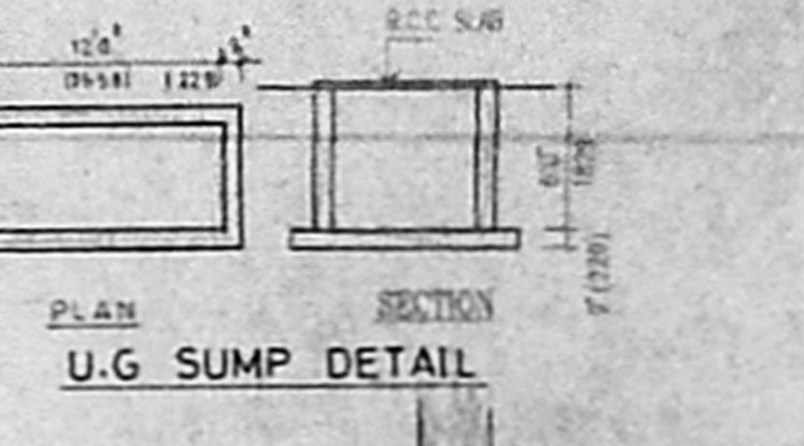
FIRST FLOOR PLAN



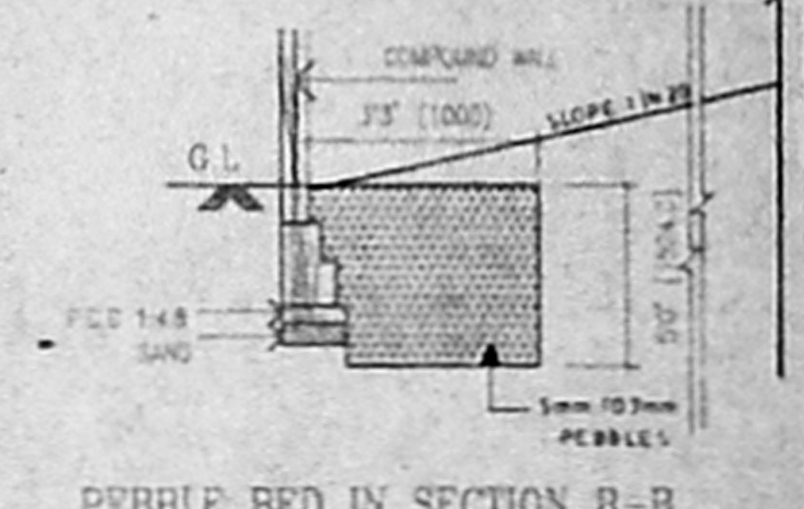
ELEVATION



COMPOUND WALL DETAIL



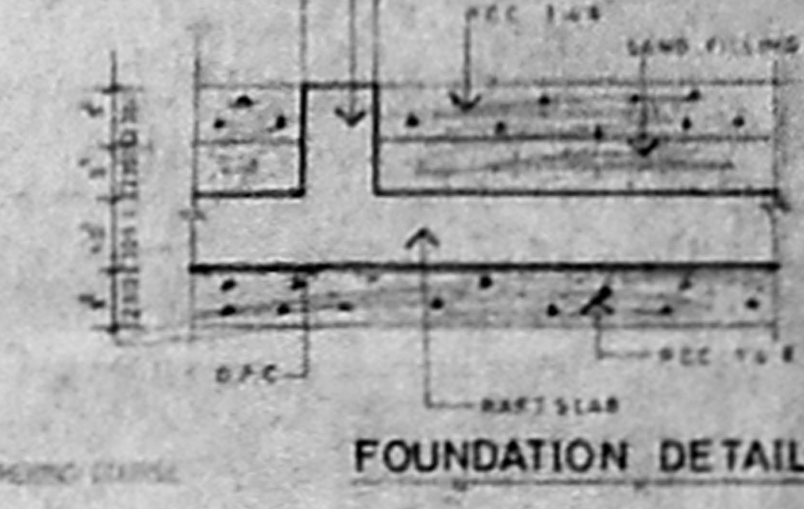
U.G SUMP DETAIL



PEBBLE BED IN SECTION B-B



WELL DETAIL



FOUNDATION DETAIL

SCHEDULE OF JOINTS			
TYPE	DESCRIPTION	WID	HT
J1	FRENCH JOINT	4"0	3"0
J2	FLUSH JOINT	3"0	3"0
J3	FLUSH JOINT	3"0	3"0
J4	GLAZED WINDOW	4"0	4"0
J5	GLAZED WINDOW	4"0	4"0
J6	GLAZED WINDOW	4"0	4"0
J7	GLAZED WINDOW	4"0	4"0
J8	GLAZED WINDOW	4"0	4"0
J9	GLAZED WINDOW	4"0	4"0
J10	GLAZED WINDOW	4"0	4"0
J11	GLAZED WINDOW	4"0	4"0
J12	GLAZED WINDOW	4"0	4"0
J13	GLAZED WINDOW	4"0	4"0
J14	GLAZED WINDOW	4"0	4"0
J15	GLAZED WINDOW	4"0	4"0
J16	GLAZED WINDOW	4"0	4"0
J17	GLAZED WINDOW	4"0	4"0
J18	GLAZED WINDOW	4"0	4"0
J19	GLAZED WINDOW	4"0	4"0
J20	GLAZED WINDOW	4"0	4"0
J21	GLAZED WINDOW	4"0	4"0
J22	GLAZED WINDOW	4"0	4"0
J23	GLAZED WINDOW	4"0	4"0
J24	GLAZED WINDOW	4"0	4"0
J25	GLAZED WINDOW	4"0	4"0
J26	GLAZED WINDOW	4"0	4"0
J27	GLAZED WINDOW	4"0	4"0
J28	GLAZED WINDOW	4"0	4"0
J29	GLAZED WINDOW	4"0	4"0
J30	GLAZED WINDOW	4"0	4"0
J31	GLAZED WINDOW	4"0	4"0
J32	GLAZED WINDOW	4"0	4"0
J33	GLAZED WINDOW	4"0	4"0
J34	GLAZED WINDOW	4"0	4"0
J35	GLAZED WINDOW	4"0	4"0
J36	GLAZED WINDOW	4"0	4"0
J37	GLAZED WINDOW	4"0	4"0
J38	GLAZED WINDOW	4"0	4"0
J39	GLAZED WINDOW	4"0	4"0
J40	GLAZED WINDOW	4"0	4"0
J41	GLAZED WINDOW	4"0	4"0
J42	GLAZED WINDOW	4"0	4"0
J43	GLAZED WINDOW	4"0	4"0
J44	GLAZED WINDOW	4"0	4"0
J45	GLAZED WINDOW	4"0	4"0
J46	GLAZED WINDOW	4"0	4"0
J47	GLAZED WINDOW	4"0	4"0
J48	GLAZED WINDOW	4"0	4"0
J49	GLAZED WINDOW	4"0	4"0
J50	GLAZED WINDOW	4"0	4"0
J51	GLAZED WINDOW	4"0	4"0
J52	GLAZED WINDOW	4"0	4"0
J53	GLAZED WINDOW	4"0	4"0
J54	GLAZED WINDOW	4"0	4"0
J55	GLAZED WINDOW	4"0	4"0
J56	GLAZED WINDOW	4"0	4"0
J57	GLAZED WINDOW	4"0	4"0
J58	GLAZED WINDOW	4"0	4"0
J59	GLAZED WINDOW	4"0	4"0
J60	GLAZED WINDOW	4"0	4"0
J61	GLAZED WINDOW	4"0	4"0
J62	GLAZED WINDOW	4"0	4"0
J63	GLAZED WINDOW	4"0	4"0
J64	GLAZED WINDOW	4"0	4"0
J65	GLAZED WINDOW	4"0	4"0
J66	GLAZED WINDOW	4"0	4"0
J67	GLAZED WINDOW	4"0	4"0
J68	GLAZED WINDOW	4"0	4"0
J69	GLAZED WINDOW	4"0	4"0
J70	GLAZED WINDOW	4"0	4"0
J71	GLAZED WINDOW	4"0	4"0
J72	GLAZED WINDOW	4"0	4"0
J73	GLAZED WINDOW	4"0	4"0
J74	GLAZED WINDOW	4"0	4"0
J75	GLAZED WINDOW	4"0	4"0
J76	GLAZED WINDOW	4"0	4"0
J77	GLAZED WINDOW	4"0	4"0
J78	GLAZED WINDOW	4"0	4"0
J79	GLAZED WINDOW	4"0	4"0
J80	GLAZED WINDOW	4"0	4"0
J81	GLAZED WINDOW	4"0	4"0
J82	GLAZED WINDOW	4"0	4"0
J83	GLAZED WINDOW	4"0	4"0
J84	GLAZED WINDOW	4"0	4"0
J85	GLAZED WINDOW	4"0	4"0
J86	GLAZED WINDOW	4"0	4"0
J87	GLAZED WINDOW	4"0	4"0
J88	GLAZED WINDOW	4"0	4"0
J89	GLAZED WINDOW	4"0	4"0
J90	GLAZED WINDOW	4"0	4"0
J91	GLAZED WINDOW	4"0	4"0
J92	GLAZED WINDOW	4"0	4"0
J93	GLAZED WINDOW	4"0	4"0
J94	GLAZED WINDOW	4"0	4"0
J95	GLAZED WINDOW	4"0	4"0
J96	GLAZED WINDOW	4"0	4"0
J97	GLAZED WINDOW	4"0	4"0
J98	GLAZED WINDOW	4"0	4"0
J99	GLAZED WINDOW	4"0	4"0
J100	GLAZED WINDOW	4"0	4"0

SPECIFICATIONS:-
FOUNDATIONS
 R.C.C. FOOTINGS TO BE LAID OVER BED OF R.C.C. SLAB OVER A SAND CUSHION, BRICK SUPPORTED BY PILE DRIVEN.
SUPER STRUCTURE
 BRICK WORK IN CEMENT MORTAR 1:5 MIX.
R.C.C.
 SLAB, LINTEL, STAIRS, BEAMS, SUNSHADES ETC. IN 1:2:4 MIX WITH SUITABLE REINFORCEMENT.
FINISHES
 MOSAIC TILE FLOORING, WALLS ARE PLASTERED WITH C.M. 1:4 MIX AND PAINTED.
JOISTRY
 BEST TEAK TRUSS WOOD AND GOOD QUALITY ALUMINUM EXTRUSION.

AREA STATEMENT:-

PLAT AREA	81070 SFT	7531 SQ.M
BASEMENT	26110 SFT	2426 SQ.M
GROUND FLOOR	28630 SFT	2660 SQ.M
MEZZANINE	9440 SFT	877 SQ.M
FIRST FLOOR	35120 SFT	3253 SQ.M
SECOND FLOOR	20390 SFT	1894 SQ.M
TOTAL	119690 SFT	11120 SQ.M

F.S.I COVERED - 11969/8107 - 1.47

REFERENCE
 PROPOSED ROAD
 BOUNDARY
 SEWAGE LINE
 WATER LINE

SIGNATURE OF OWNER
 For SANJAY BUILDER AND LAND DEVELOPER

SIGNATURE OF ARCHITECT
 PRANAV SURESHKARAN, RA NO 145

CORPORATION DRAWING
 U.P.

PROJECT
 PLAN SHOWING THE PROPOSED BUILDING AT 6008 NO.11, SIVASANGA ROAD, NUNGAMBARAM, MADRAS. OLD SURVEY NO. 102, 103/4, 105, 61.5, 62, 63, 64, 65.

S. D. I. C. ARCHITECTURE & INTERIORS
 12, LINK ROAD, KOTTURUPALLAM, CHENNAI - 600 044.
 PHONE: 43890 & 411340.

PROJ NO: ENC NO: C 01
 SCALE: 1" TO 8'
 DATE: OCT 95

APPROVED
 FOR MEMBER SECRETARY
 MADRAS METROPOLITAN
 DEVELOPMENT AUTHORITY
 MADRAS - 600 009.